

**FEATURES:**

- Large active area
- Low cost
- Penetrative ceramic frame
- Film SiO<sub>2</sub> 0.9um

**DETECTOR FOR:**

- Alpha spectrometry
- Protons, electrons and ions detector
- Radon detector
- Physical experiment
- Spectrometric or counting systems



**Table 1 - ABSOLUTE MAXIMUM RATINGS**

Name	Value
Reverse voltage	300 V

**Table 2 - SPECIFICATIONS**

Name	Min.	Recommended/ Set-point	Max.
Active area		2500mm <sup>2</sup> (4x625mm <sup>2</sup> )	
Reverse voltage	1V		250V
Total leakage current	0.1uA		10uA
Capacity (Reverse voltage=1V)		250pF	
Capacity (Reverse voltage=300V)		125pF	
Energy resolution		230-250keV	
Weight, grams		22g	

**SPECTRUM EXAMPLE**

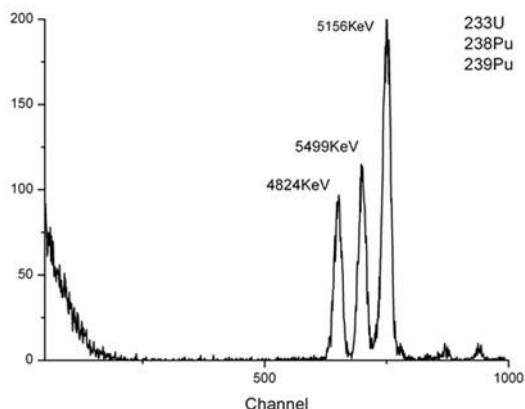


Fig.1. Spectrum example (in vacuum) <sup>(1)</sup>

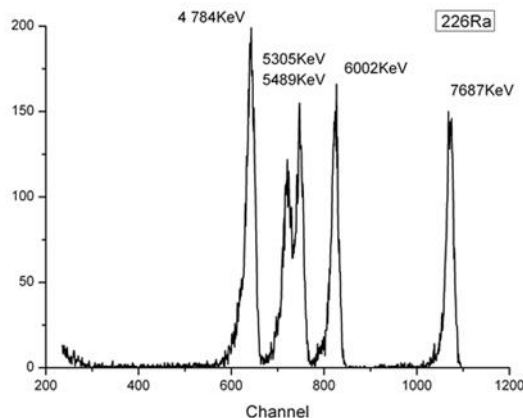


Fig.2. Spectrum example (in vacuum) <sup>(1)</sup>

(1) Spectrum obtained in vacuum, V<sub>bias</sub>=200V. Spectrum quality depends on many parameters, the manufacturer does not guarantee the receipt of the spectrum according to the figure.

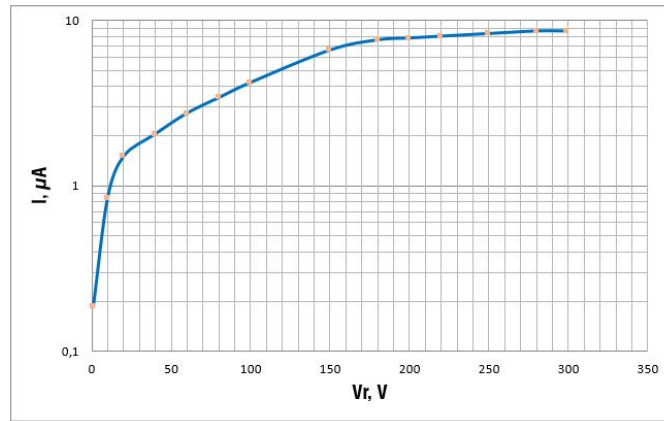


Fig.3. Dark current vs. reverse voltage

### DIMENSIONS AND DESIGNATIONS

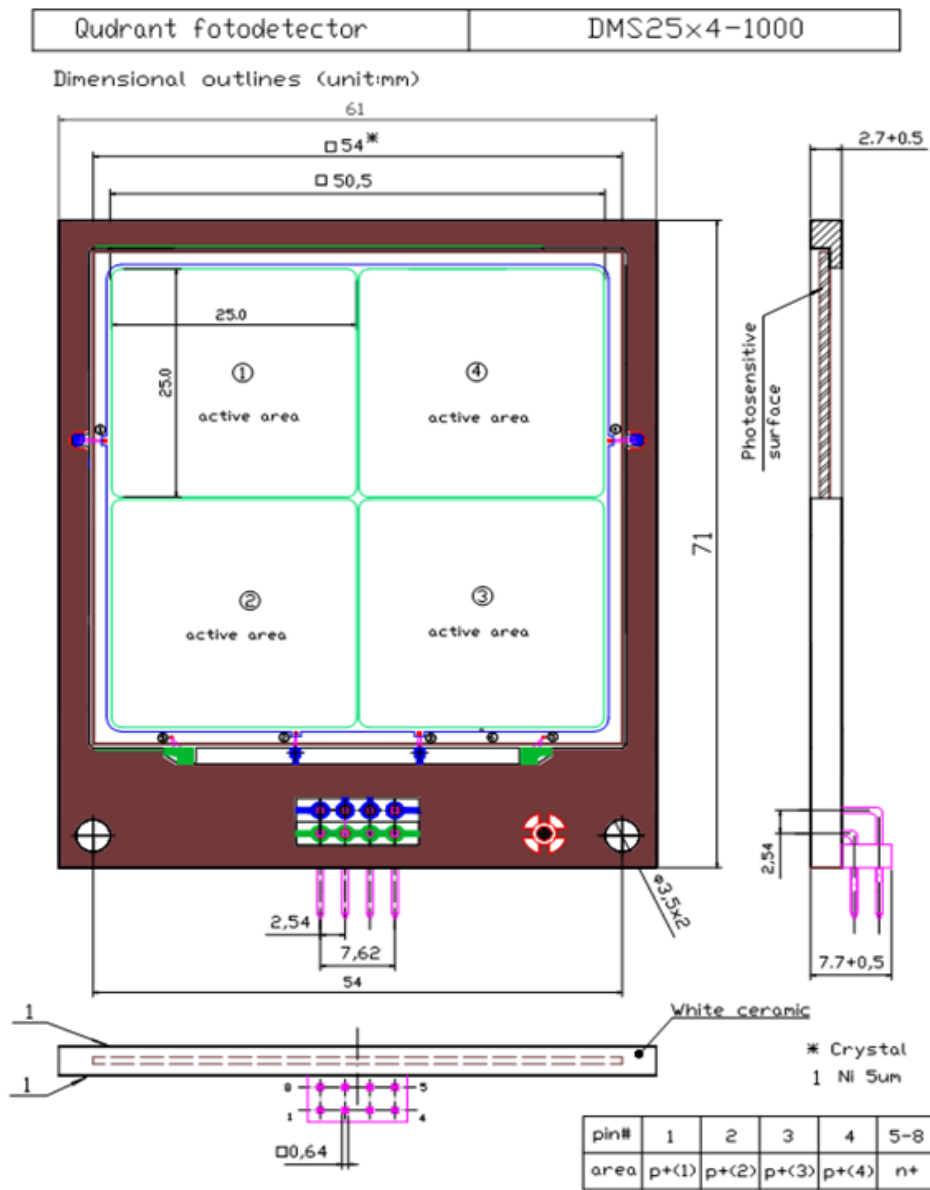


Fig.4. Case drawing and Pin configuration.

**ATTENTION: DO NOT TOUCH THE ACTIVE AREA OF THE DETECTOR!**

**Contacts and order: [info@scintillators.ru](mailto:info@scintillators.ru)**

**Web: <https://scintillators.ru>**

#### **OEM PRODUCTS PURCHASE AND USE CONDITIONS**

**Products of the OEM category are not intended for the end user. Products of this category are designed exclusively for developers and manufacturers of electronic equipment. Manufacturer of this product cannot check the conditions of use and storage, compliance with the requirements of "absolute electrical values" and "parameters" sections, other requirements listed in product documentation, or customer technical expertise. By purchasing this product, you agree that this product is not subjected to return or replacement. The manufacturer ensures the QC of the entire batch of products before shipment to the customer.**